

DESIGN, DIGNITY, DEMENTIA: *Dementia-related Design and the Built Environment*

**FANSHAWE**

**McCormick Home**

Team: Mirey Akhmad, Kristy Braun, Corey Mason-Grant, Adam Mifsud

DESIGN CONCEPT

As designers, it is important to understand how and why we can create the most desirable and necessary spaces for the people that interact within them the most. Designing a memory care center for residents with dementia should prioritize safety, cognitive-stimulating activities that seamlessly ties together a residence, home-like design that ensures residents feel comforted, supported and acknowledged during their stay. The key is to design a space that takes all factors and users into consideration. The goal is to design a safe, human centric, space that encompasses a lifestyle change that is subtle for residents. This can be done by implementing design principals that focus on wayfinding, memory rehabilitation or memory therapy, minimal stimulation or overwhelming spaces, interactive features, community spaces to engage with others, and spaces to create a sense of purpose for them. Based on research and precedent studies, it isn't only achievable to design a space that incorporates all these aspects but is fully necessary to do so to achieve a successful memory care facility design.

QUESTIONS

How can a long-term care residence be designed to help enrich the lives of people living with dementia?

SAFETY

What could be done to improve the buildings design that will result in the safety of the residents, staff, and visitors while also enriching the lives of residents?

INCLUSIVITY

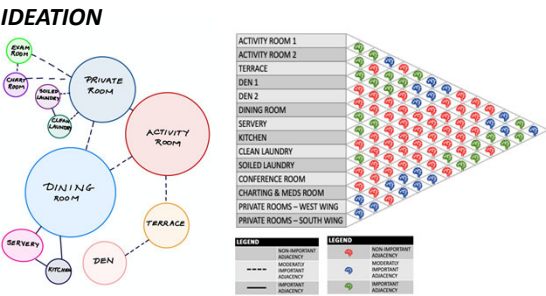
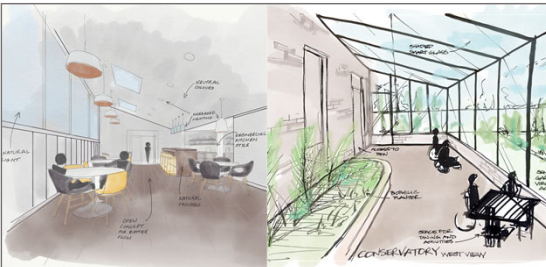
How can we reduce the institutional restrictions and promote inclusivity while enriching the lives of people with dementia?

COMMUNITY

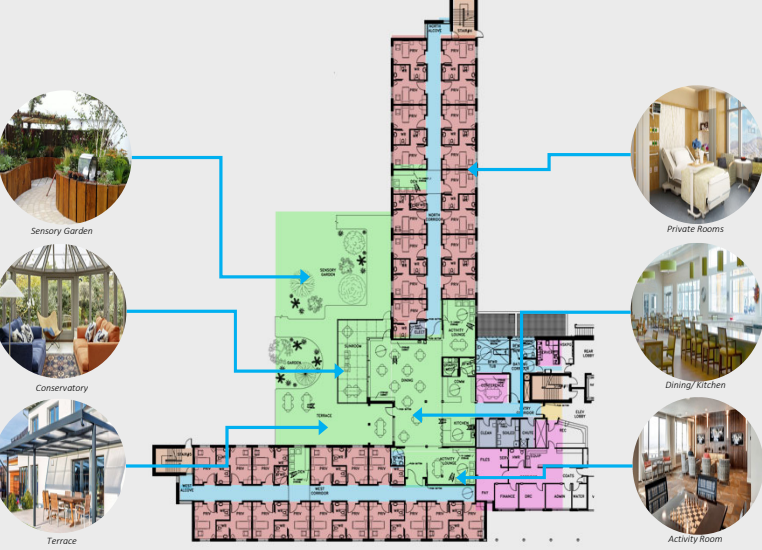
How do we involve community in memory care facilities in order to help enrich the lives of people with dementia?

STIMULATION

How can sensory stimulation be carefully addressed to help enrich the lives of people with dementia without the risk of overstimulation?



ZONING



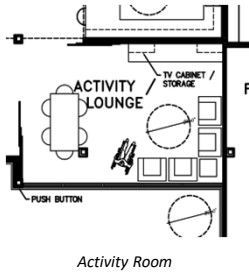
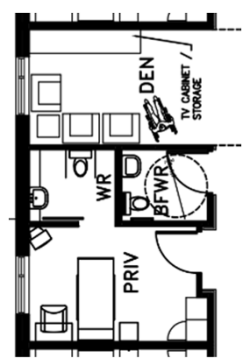
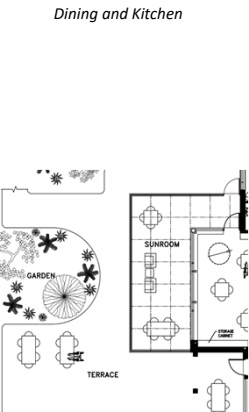
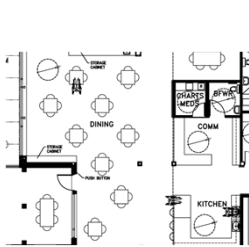
LIGHT MAP



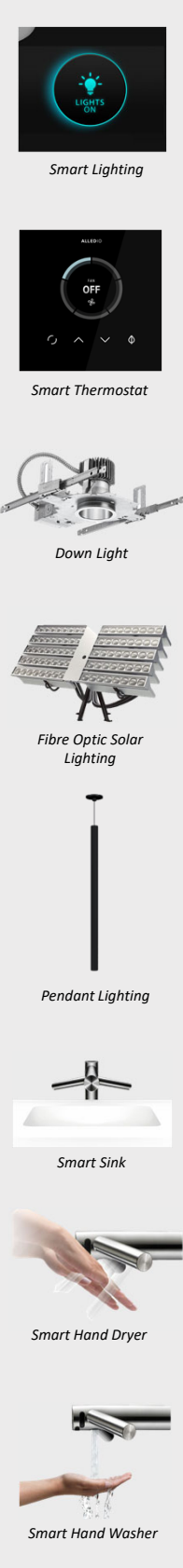
FURNITURE & FINISHES



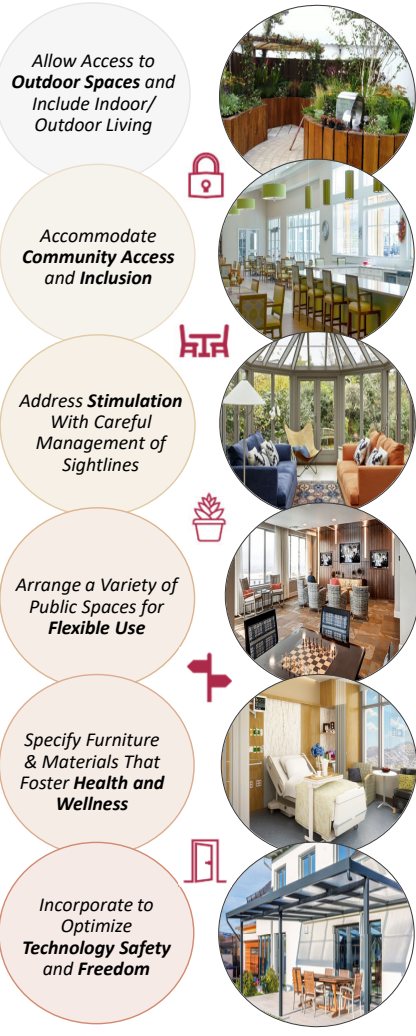
MICRO PLANS



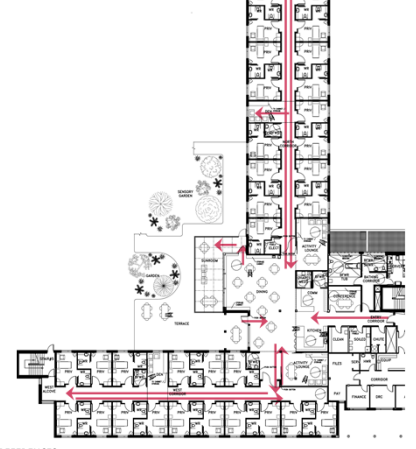
TECHNOLOGY



GUIDELINES TO DESIGNING DIGNIFIED ENVIRONMENTS



NAVIGATION



REFERENCES

1. Alzheimer's Association. (2019). *2019 Alzheimer's Disease Facts and Figures*. Alzheimer's Association.

2. World Health Organization. (2012). *Dementia: A Public Health Priority*. World Health Organization.

3. National Institute on Aging. (2018). *Alzheimer's Disease: What You Need to Know*. National Institute on Aging.

4. National Institute on Aging. (2018). *Alzheimer's Disease: How to Get the Most Out of Life with the Disease*. National Institute on Aging.

5. National Institute on Aging. (2018). *Alzheimer's Disease: How to Get the Most Out of Life with the Disease*. National Institute on Aging.