



NIKE OFFICE

ADAM MIFSUD

NIKE HAS HIRED ADAM MIFSUD DESIGN AS A DESIGNER TO REDESIGN AN EXISTING BUILDING THEY PURCHASED FOR ONE OF THEIR CANADIAN OFFICES IN TORONTO. THE EXISTING BUILDING IS LOCATED IN CORKTOWN. IT IS A ONE STOREY BUILDING, 12,691 SQ. FT. WITH ACCESS ON ALL SIDES. THE MAIN PUBLIC ENTRANCE WILL BE LOCATED ON THE NORTH SIDE OF THE BUILDING. THERE ARE LARGE EXISTING WINDOWS THAT WILL BE KEPT ALONG WITH A LARGE SKYLIGHT FOR NATURAL LIGHT EXPOSURE. NIKE IS REQUESTING WORKING AREAS FOR 62 EMPLOYEES. DEPARTMENTS THAT ARE REQUIRED ARE FOR SALES, ACCOUNTING, MARKETING, ALONG WITH TWO MANAGER OFFICES AND TWO MEETING ROOMS. NIKE TENDS TO DESIGN THEIR SPACES DIFFERENTLY FROM ONE ANOTHER, BUT USING SIMILAR MATERIALS. THIS OFFICE WAS DESIGNED WITH THEIR REQUESTS AS WELL AS NEW FEATURES THAT ARE PREVELANT IN NEW OFFICE SPACE DESIGN. INCORPORATING HUMAN-CENTRIC DESIGN WAS IMPORTANT. INCORPORATING SPACES FOR EMPLOYEES TO REST OR COLLABORATE CAN BENEFIT THEIR WORK AND IN THE LONG RUN BENEFIT THE COMPANY.

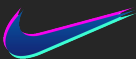
DESIGN PROPOSAL





NIKE

NIKE IS AN ATHLETIC WEAR AND SPORTS EQUIPMENT COMPANY BASED OUT OF PORTLAND OREGON, UNITED STATES. THE COMPANY WAS FOUNDED BY PHIL KNIGHT IN 1964, ORIGINALLY CALLED BLUE RIBBON SPORTS. THE NIKE "SWOOSH", THEIR LOGO WAS DESIGNED BY A STUDENT A PART OF A COMPETITION. THE LOGO REPRESENTS MOVEMENT AND THE WING OF A GODDESS, THE GODDESS NIKE. NIKE WAS THE GODDESS OF VICTORY AND KNIGHT FELT THIS FIT THE COMPANY PERFECTLY. NIKE IS A COMPANY THAT PROMOTES ATHLETIC ACTIVITY, AND HEALTHY LIFESTYLES. THEY ARE BASED ON EQUALITY FOR ALL AND WANT TO DESIGN EQUIPMENT THAT BENEFITS THEIR ATHLETES IN ALL CATEGORIES.





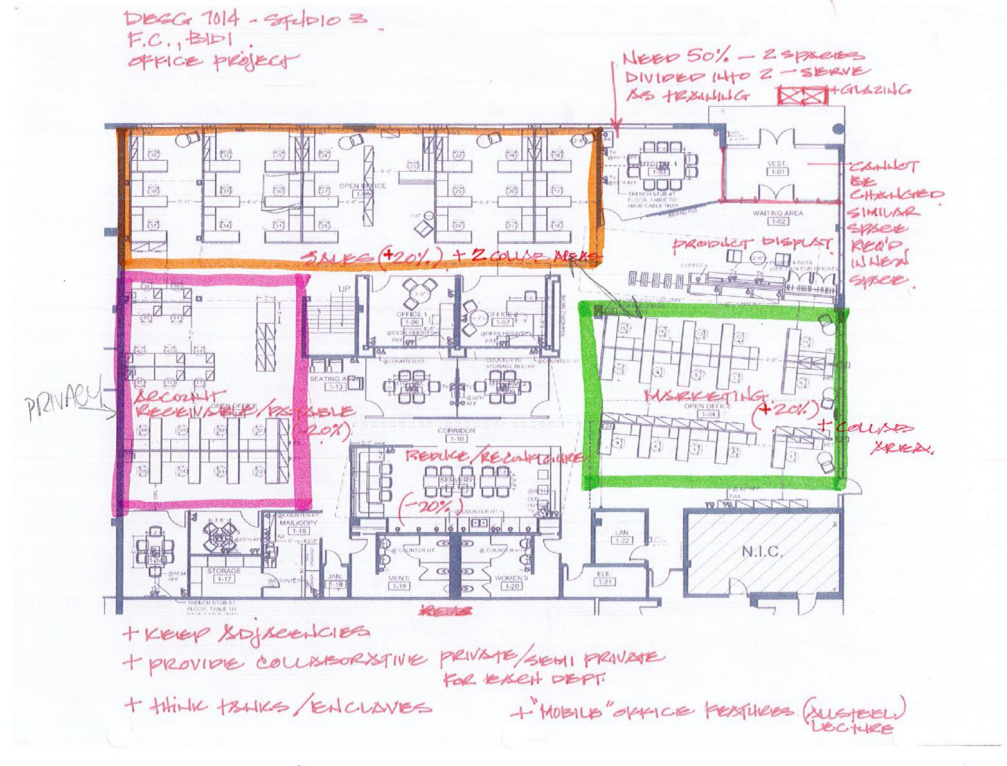
- EXISTING BUILDING RE-DESIGNED FOR NIKE
- COMMUNITY WITH LOTS OF CHARACTER
- AFFORDABLE

CORKTOWN IS LOCATED NEAR TORONTO'S CENTRAL BUSINESS DISTRICT (CBD) WHICH IS GREAT FOR YOUNG EMPLOYEES THAT WORK IN THE AREA. CORKTOWN IS KNOWN FOR ITS AFFORDABILITY WHICH BENEFITS NIKE AND EMPLOYEES THAT ARE CHOOSING TO LIVE CLOSE BY. THE NEW NIKE OFFICE IN CORKTOWN WILL ADOPT FEATURES FROM ITS AREA AND MIX IT WITH MODERN FEATURES NIKE TENDS TO BRING.

LOCATION – CORKTOWN TORONTO, ONTARIO

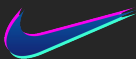
NIKE REQUIRED THAT THE NEW SPACE REFLECTED THEIR COMPANY, BUT ALSO IMPROVED THE SPACE FROM THEIR PREVIOUS OFFICE. THEY REQUIRED A 20% INCREASE IN SEATING FOR SALES TOTALLING 26. AN INCREASE OF 20% FOR MARKETING WAS ALSO NECESSARY, A TOTAL OF 18. A REDUCTION BY 20% FOR ACCOUNTING WAS REQUESTED, TOTALLING 15 PEOPLE. THEY ALSO WANTED 2 MANAGERS OFFICES, ALONG WITH 2 MEETING ROOMS THAT COULD FIT 6-8 PEOPLE AT A TIME. IT WAS NECESSARY TO MAKE THESE ROOMS CONNECTABLE BY AN ACCORDIAN WALL FOR TRAINING PURPOSES. A WORK CAFÉ WAS ALSO REQUIRED.

CLIENT DESIGN REQUIREMENTS



IMPORTANT DESIGN CONSIDERATIONS FOR THE CLIENT:

- TEAMWORK
- TELECOMMUTING
- SUSTAINABILITY
- COMMUNITY
- FLATTENED
- WELLBEING
- COLLABORATION
- HIERARCHIES



HUMAN-CENTRIC DESIGN

- WELL
- NATURAL LIGHTING
- EMPLOYEE WELLNESS
 - PHYSICAL HEALTH
 - MENTAL HEALTH
 - ACTIVE LIFESTYLE
 - NUTRITION
- INCLUSIVE DESIGN
 - BARRIER-FREE
 - UNIVERSAL DESIGN



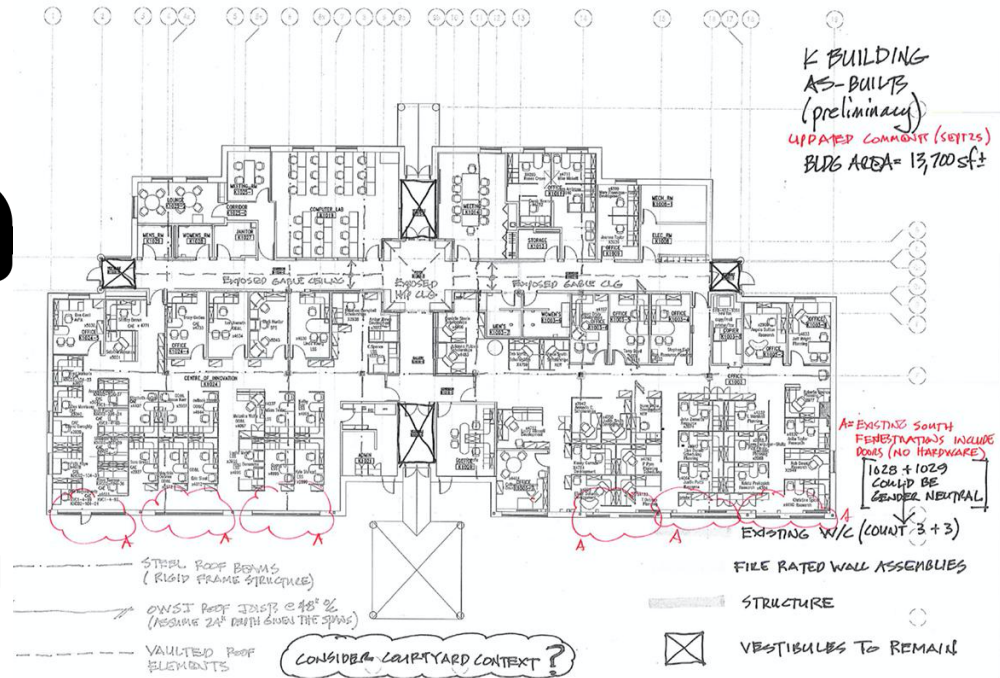
SOCIAL ZONING

- PRIVATE OFFICES
- PRIVATE MEETING ROOMS
- THINKTANKS
- VERSATILE COLLABORATION SPACES
- WORK CAFÉ
- DESKS THAT CAN BE SHARED OR AREN'T 'OWNED'
- PRIVATE WORK ROOM



SUSTAINABILITY

- EXISTING BUILDING
- OPEN CONCEPT
- LED LIGHTING
- SOME INTERIOR MATERIALS ARE RECYCLED
 - RECONSTITUTED CONCRETE
 - RECYCLED BASKETBALL HARDWOOD FLOORING



DESIGN DRIVERS & AS-BUILT PLANS



Best Practices in Current Office Design Trends

EMPLOYEE WELLNESS

- PHYSICAL HEALTH
- MENTAL HEALTH
- ACTIVE LIFESTYLE
- NUTRITION



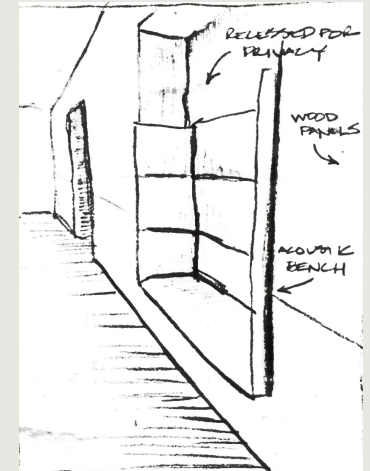
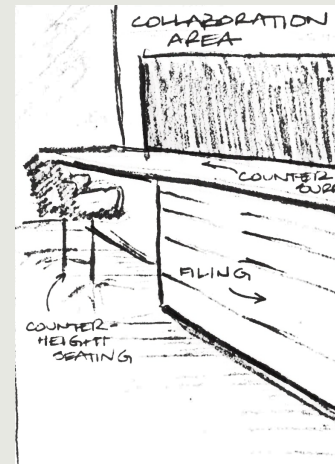
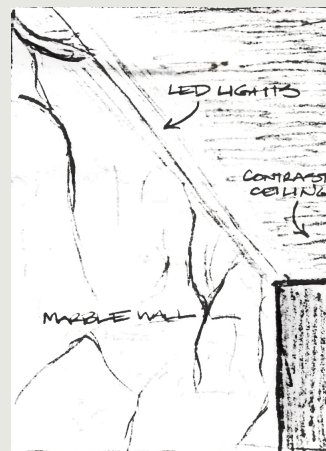
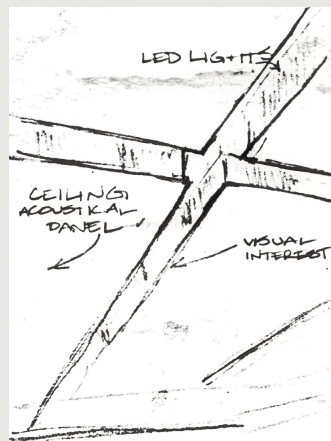
ASTHETICS

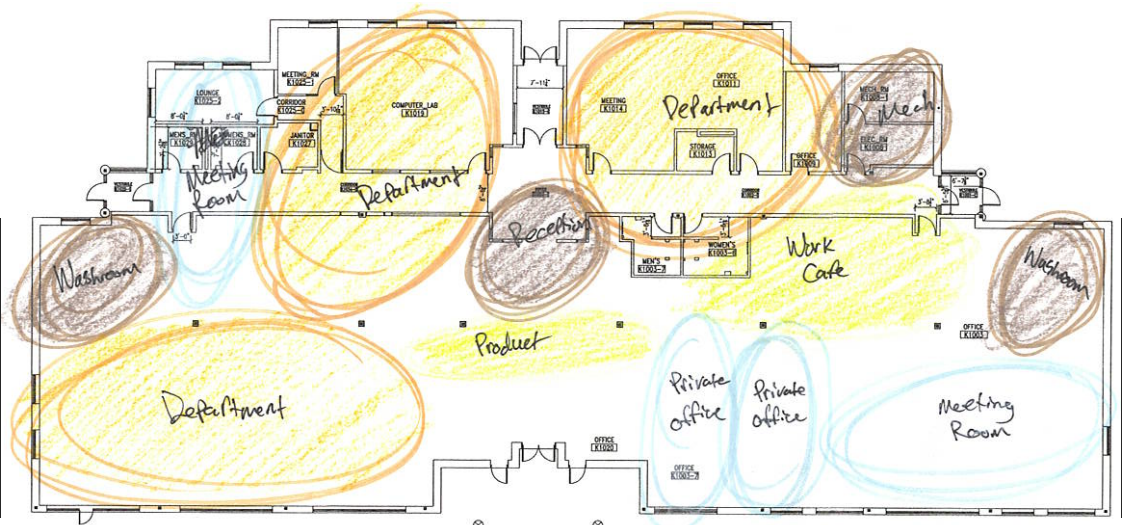
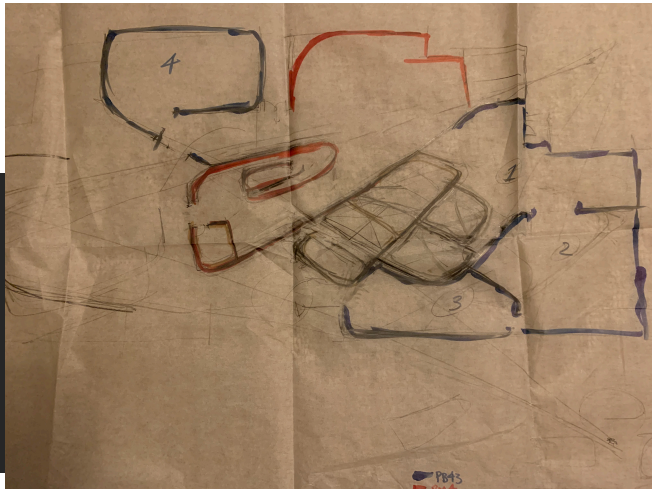
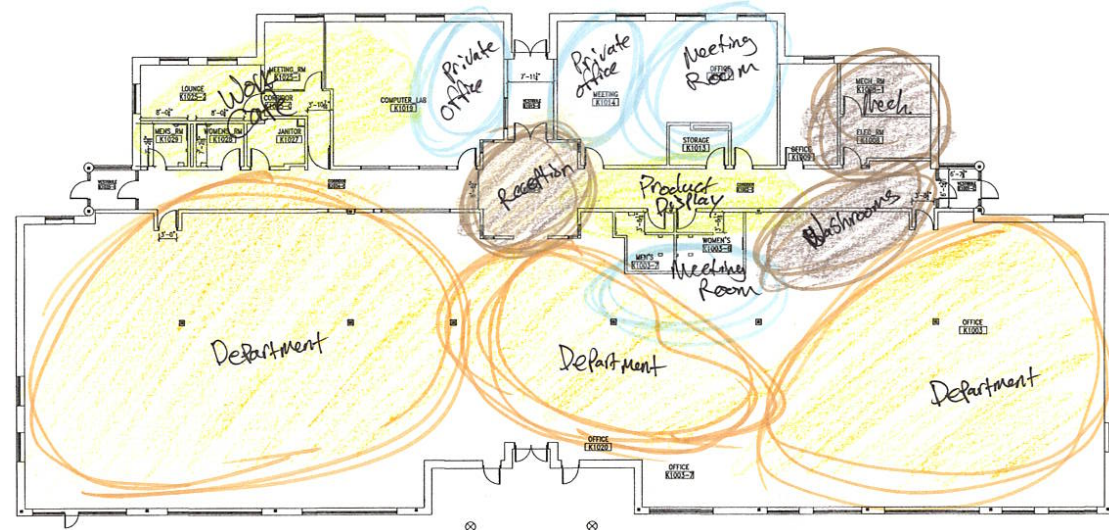
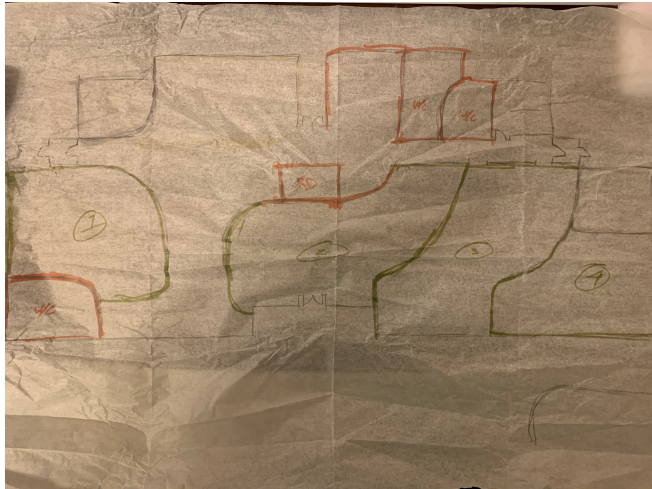
- NEURO-ASTHETICS
- ENGAGEMENT
- CULTURE/BRANDING

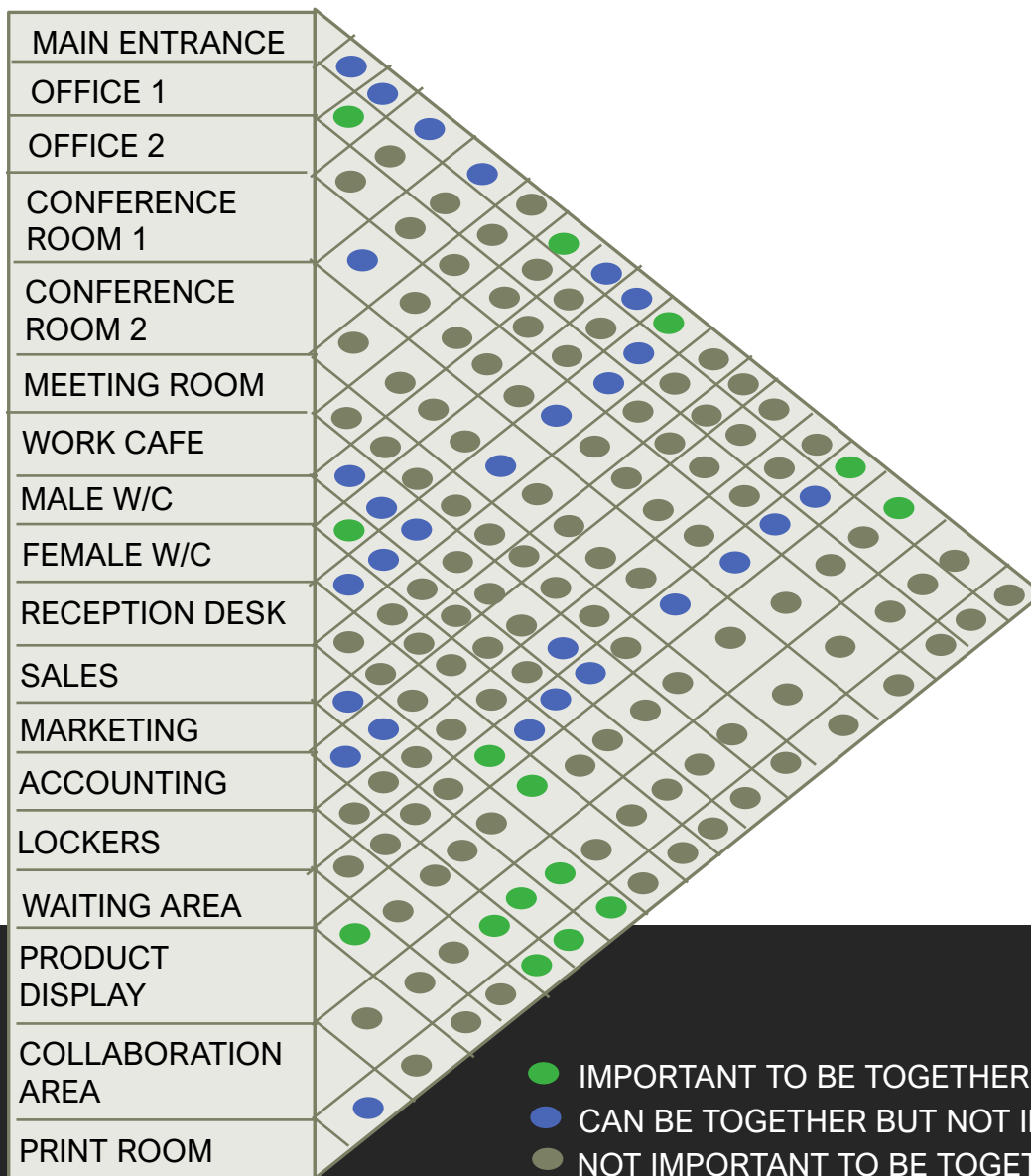


ZONES

- FLEXIBLE WORKSPACES
- WORK CAFÉ
- RESIMERCIAL

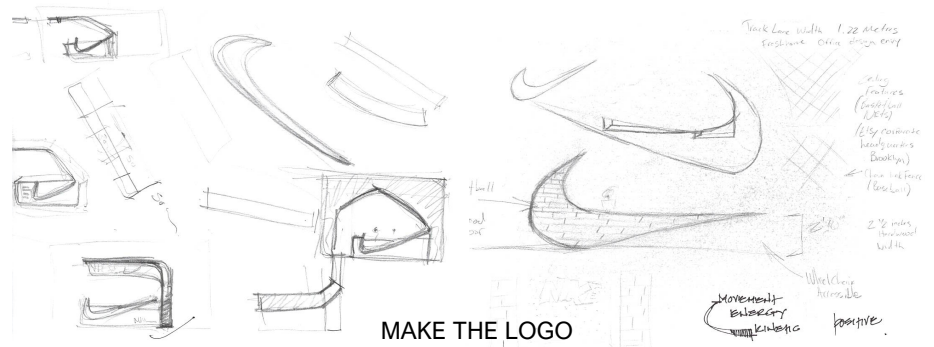






SKETCHES FROM THE RECEPTION DESK,
ALONG WITH INSPIRATIONAL PHOTOS
FROM OTHER NIKE BUILDINGS.

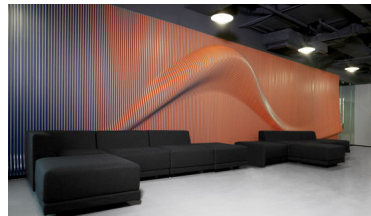
INSPIRATION



MAKE THE LOGO
AND DESK FEEL AS
THEY ARE MOVING



SIMILAR
SHAPE
INSPIRED
DESK



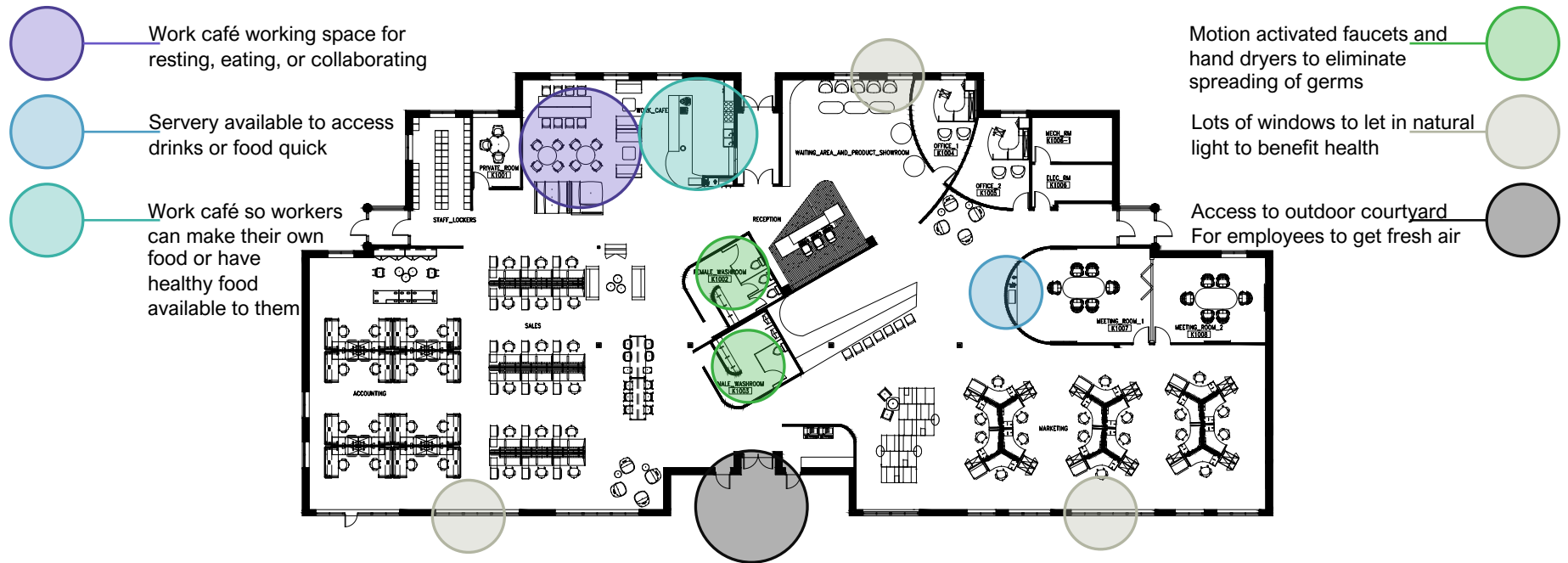
CURVES INSPIRED
CURVED WALLS
IN THE OFFICE

THEIR USE OF BASKETBALL
HARDWOOD FLOORING
AND TILES INSPIRED
MATERIALS



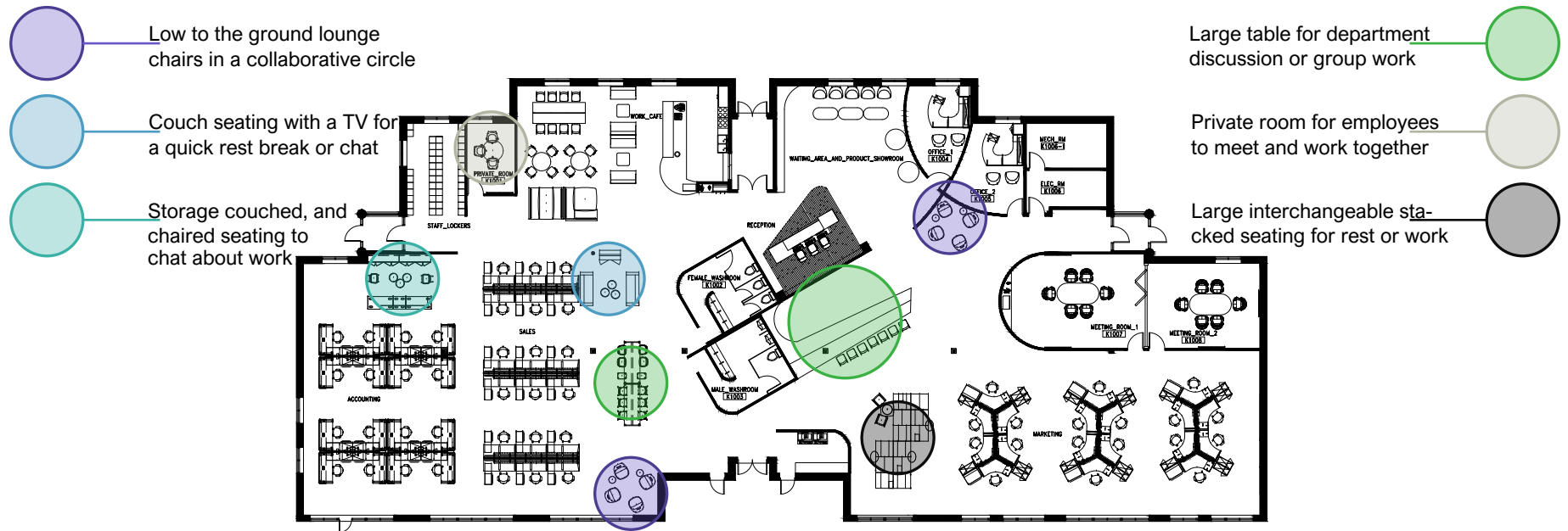
MAKE THE DESK
FEEL AS THOUGH
IT IS MOVING
ITSELF





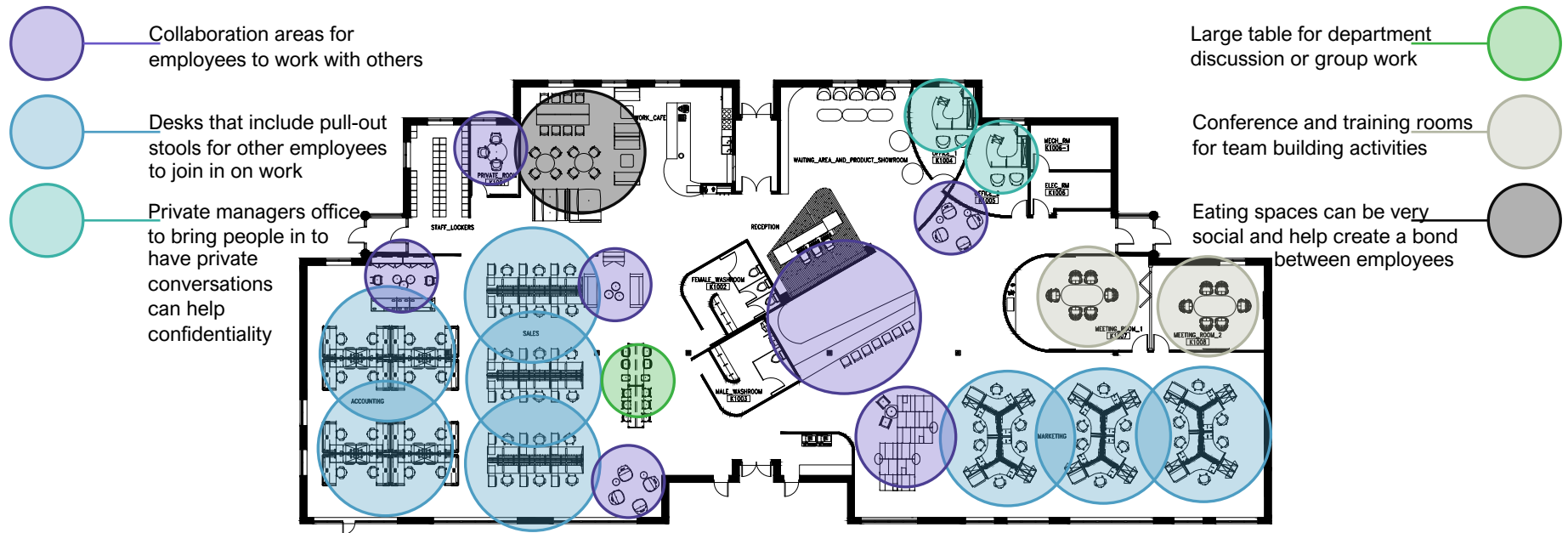
SUSTAINABILITY: WELLBEING



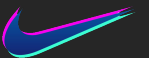


HIGH PERFORMANCE WORKSPACES



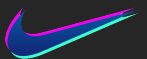


SENSE OF COMMUNITY – EVIDENCE BASED DESIGN



THE DESIGN FOR THIS NIKE OFFICE WAS BASED ON THEIR REQUESTS, PRELIMINARY RESEARCH, HUMAN-CENTRIC DESIGN, AND THE COMPANY NIKE ITSELF. STUDYING AND RESEARCHING WHAT OPTIMAL OFFICES ARE LIKE TODAY, AND WHERE NEW OFFICES SHOULD BE HEADING WAS THE FIRST STEP. UNDERSTANDING WHAT EMPLOYEES WANT AND NEED IN THEIR WORK SPACE TO BENEFIT THEM WAS KEY. USING WELL IDEAS TO PROMOTE HEALTHY LIFESTYLES WAS ANOTHER KEY FACTOR IN THE DESIGN. IT LEAD TO HAVING A WORK CAFÉ THAT CAN PROVIDE HEALTHY MEALS FOR EMPLOYEES, ACCESS TO OUTDOOR SPACES FOR FRESH AIR, MULTIPLE WORK SPACES FOR WORKERS TO GET UP AND MOVE AROUND AND LOTS OF NATURAL LIGHTING. THE COMPANY ITSELF INSPIRED A LOT OF THINGS AS WEEL, ESPECIALLY THE LOGO. I WANTED THE FEELING OF THE LOGO TO BE REPRESENTED THROUGHOUT THE OFFICE. THE CURVED, AND STRAIGHT WALLS ARE A VISUAL METAPHOR OF THE NIKE 'SWOOSH.' THE LINE THROUGH THE CENTER OF THE OFFICE WAS INSPIRED BY THE 'SWOOSH' AS WELL.

DESIGN CONCEPT



FABRICS

ALLSTEEL HAMILTON
OXFORD (HAML20)

ALLSTEEL HAMILTON
LIPSTICK (HAML09)

ALLSTEEL HAMILTON
CLOUD (HAML18)

ALLSTEEL ACUITY
MESH LUSTRE (L)

ALLSTEEL LEATHER
BLACK (WTH01)

ALLSTEELCENTURION
APRICOT (CU47)

FINISHES

ALLSTEEL DESIGNER
WHITE (DW)

FLOORS

POLISHED CONCRETE (PC)

MOHAWK PLANE HIGH
TILE BLUE (556)

MOHAWK COLORBEAT
TILE 12BY36 ELECTRIC
ORANGE (252)

LAMINATES

ALLSTEEL
BRANDED OAK
(BO)

WALLS

REUSED BASKET-
BALL COURT (R1)

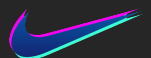
REUSED BASKET-
BALL COURT (R2)

REUSED BASKET-
BALL COURT (R3)

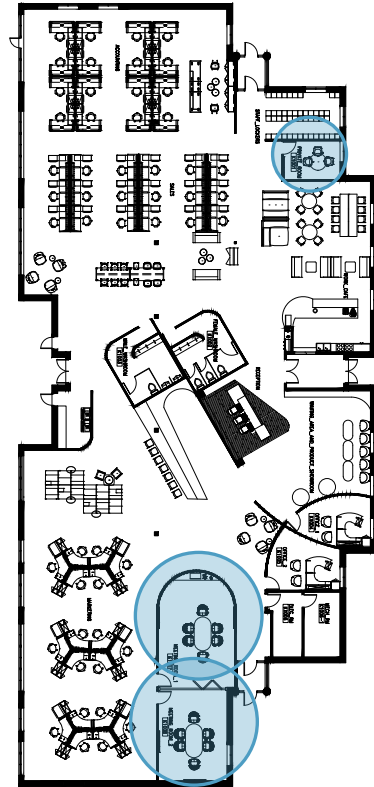
BENJAMIN CHEATING
HEART (1617)

BENJAMIN MOORE
CALYPSO ORANGE
(2015-30)

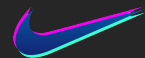
BENJAMIN MOORE
MISTY GRAY
(2124-60)



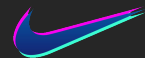
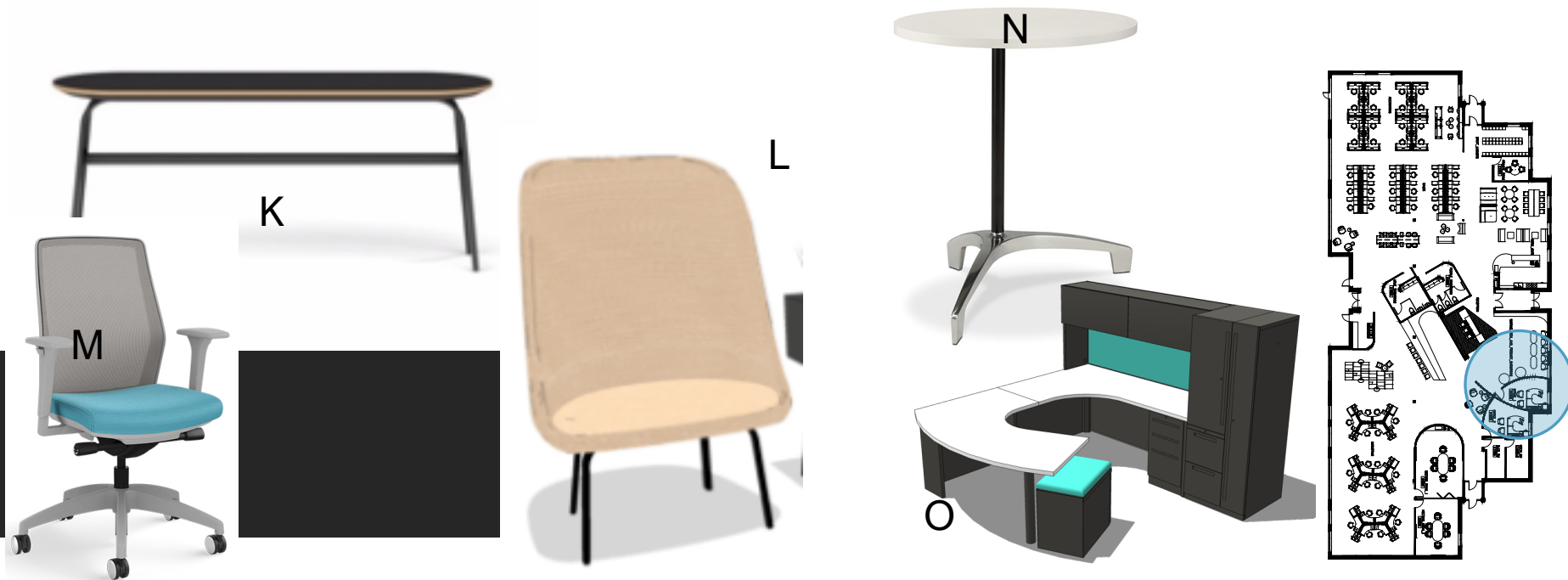
ITEM NO.	PRODUCT	MANUF-ACTURER	FABRIC/ FINISH	QTY.
A	RETREAT CONFERENCE CHAIRS	ALLSTEEL	HAMILTON OXFORD (HAML20)	3
B	RETREAT CONFERENCE TABLE	ALLSTEEL	DESIGNER WHITE (DW)	1
C	LARGE PARK PILL CONFERENCE TABLE	ALLSTEEL	DESIGNER WHITE (DW)	2
D	RETREAT EXECUTIVE CHAIRS	ALLSTEEL	HAMILTON CLOUD (HAML 18)	12



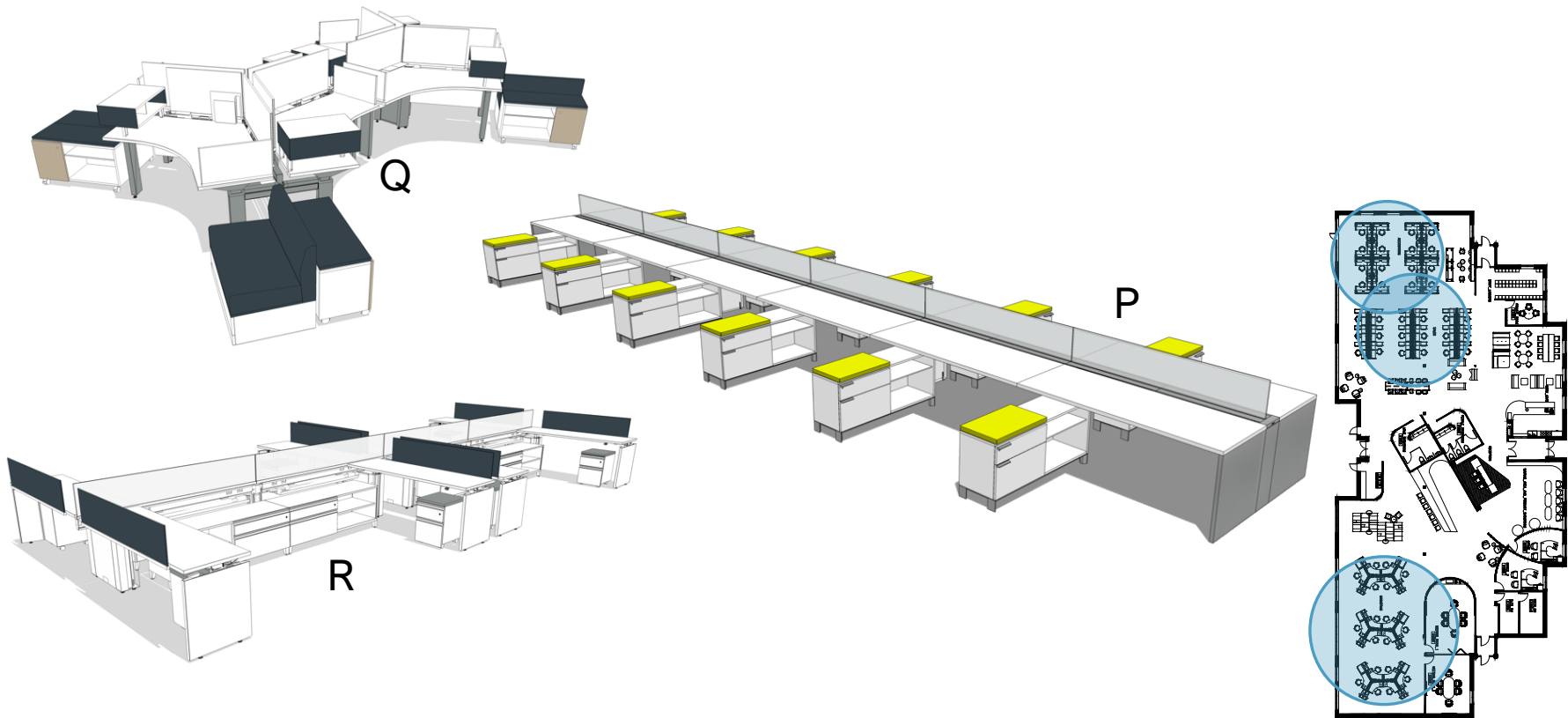
ITEM NO.	PRODUCT	MANUF-ACTURER	FABRIC/ FINISH	QTY.
E	HARVEST TABLE	ALLSTEEL	EDGE BRANDED OAK (BO)	1
F	GATHER TABLES & GATHER LOUNGE CHAIRS	ALLSTEEL	DESIGNER WHITE (DW) (TABLE) & HAMILTON LIPSTICK (HAML09) (CHAIRS)	2 TABLES 8 CHAIRS
G	GATHER BOOTH CHAIRS & GATHER BOOTH BACKS	ALLSTEEL	ALLSTEEL LEATHER BLACK (WTH01) HAMILTON CLOUD (HAML 18) (BACKS)	1 TYPICAL
H	RECHARGE BOOTH CHAIRS & RECHARGE BOOTH BACKS	ALLSTEEL	ALLSTEEL LEATHER BLACK (WTH01) HAMILTON CLOUD (HAML 18) (BACKS)	4 BENCHES
I	SUMMIT STOOL	ALLSTEEL	HAMILTON CLOUD (HAML 18)	8
J	RECHARGE AND GATHER BOOTH TABLES	ALLSTEEL	DESIGNER WHITE (DW)	4



ITEM NO.	PRODUCT	MANUF-ACTURER	FABRIC/ FINISH	QTY.
K	PARK PILL TABLE	ALLSTEEL	DESIGNER WHITE (DW)	3
L	PARK TALL BACK CHAIRS	ALLSTEEL	HAMILTON OXFORD (HAML 20)	9
M	LYRIC CHAIR	ALLSTEEL	HAMILTON CLOUD (HAML18)(FABRIC) ACUITY MESH LUSTRE (L) (MESH BACKING)	56
N	TRANSFER	ALLSTEEL	DESIGNER WHITE (DW)	2
O	CADENCE OFFICE DESK	ALLSTEEL	EDGE BRANDED OAK (BO) (VERTICAL SURFACES) DESIGNER WHITE (DW) (HORIZONTAL SURFACES)	2



ITEM NO.	PRODUCT	MANUF-ACTURER	FABRIC/ FINISH	QTY.
P	STRIDE BENCHING SYSTEM	ALLSTEEL	DESIGNER WHITE (DW) & HAMILTON OXFORD (HAML20)(FABRIC SURFACES)	18 DESKS
Q	FURTHER 120 DEGREE SYSTEM	ALLSTEEL	DESIGNER WHITE (DW) & HAMILTON OXFORD (HAML20) (FBRIC SURFACES)	18 DESKS
R	FURTHER L SHAPE SYSTEM	ALLSTEEL	DESIGNER WHITE (DW) & HAMILTON OXFORD (HAML20) (FABRIC SURFACES)	16 DESKS



ITEM NO.	PRODUCT	MANUF-ACTURER	FABRIC/ FINISH	QTY.
S	ROCK CHAIRS	ALLSTEEL	CENTURION APRICOT (CU47)	8
T	RISE	ALLSTEEL	HAMILTON OXFORD (HAML20), HAMILTON CLOUD (HAML18), HAMILTON LIPSTICK (HAML09) FOR SEATING, AND DESIGNER WHITE (DW) (TABLES)	12 SEATING PIECES 4 TABLES
U	NORMAN COPENHAGEN COUCHES	ALLSTEEL	ALLSTEEL LEATHER BLACK (WTH01)	2
V	NORMAN COPENHAGEN CHAIRS	ALLSTEEL	DESIGNER WHITE (DW)	10
W	NORMAN COPENHAGEN TABLE	ALLSTEEL	DESIGNER WHITE (DW)	2
X	RECHARGE LOUNGE COUCH	ALLSTEEL	ALLSTEEL LEATHER BLACK (WTH01)	1
Y	RECHARGE LOUNGE CHAIRS	ALLSTEEL	DESIGNER WHITE (DW)	2



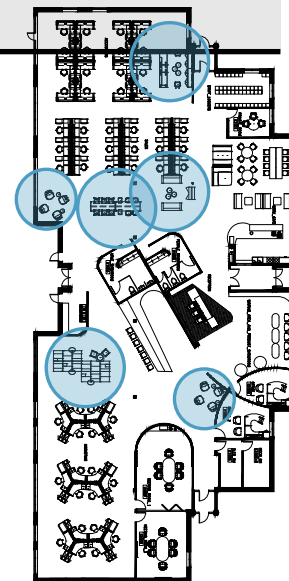
U V W

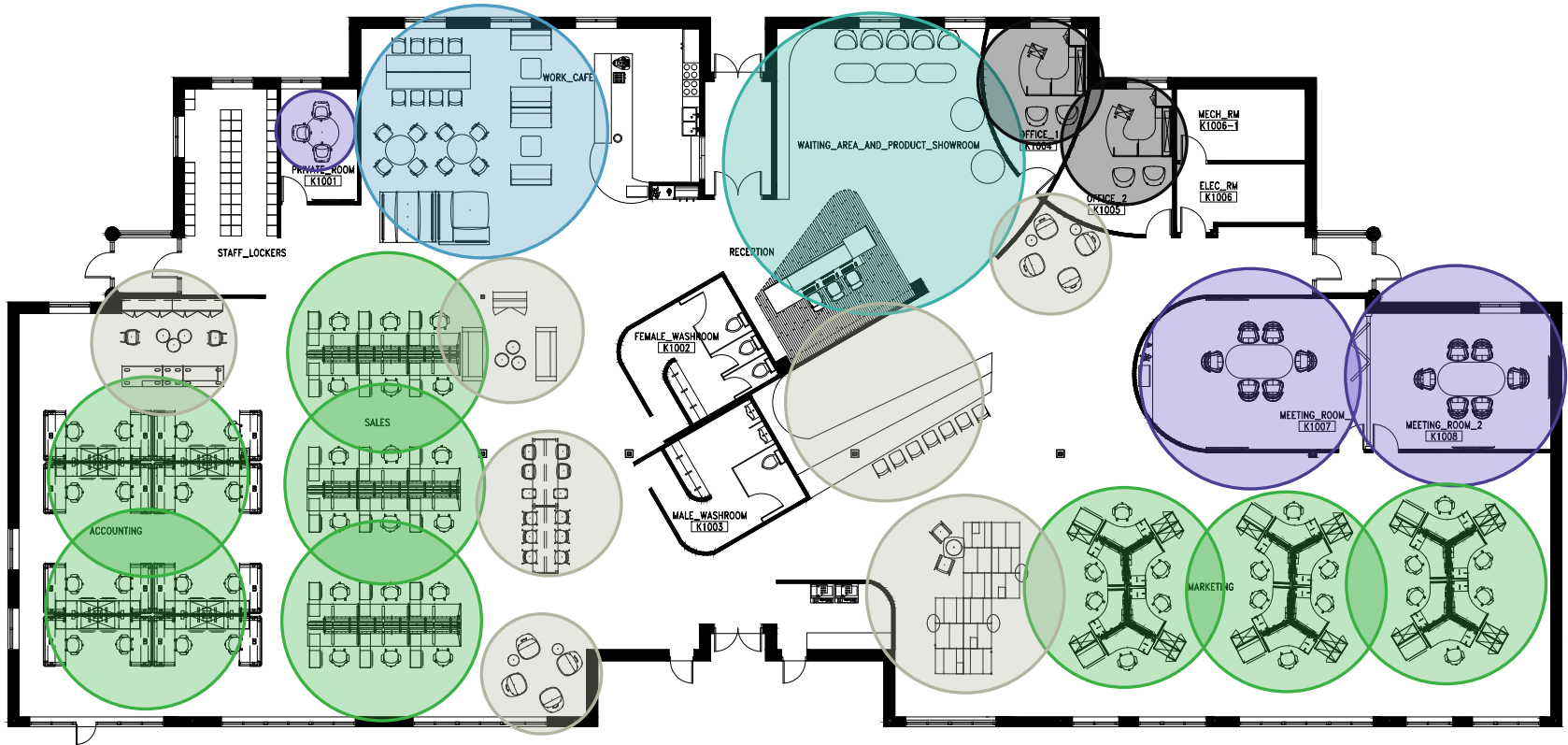


T



X Y





MEETING AND CONFERENCE
ROOMS

WORK CAFÉ

RECEPTION

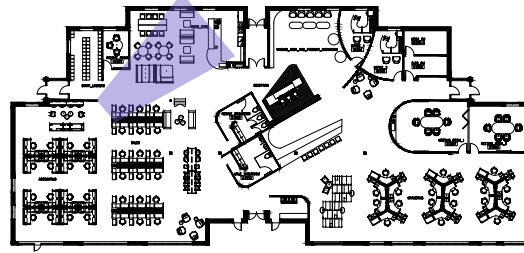
REFERENCE CHART FOR FURNITURE SPECIFICATIONS

WORK STATIONS

COLLABORATION AREAS

PRIVATE OFFICES



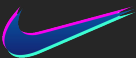


EZO BOARD ACCOUSTIC NIKE SWOOSH SHAPE

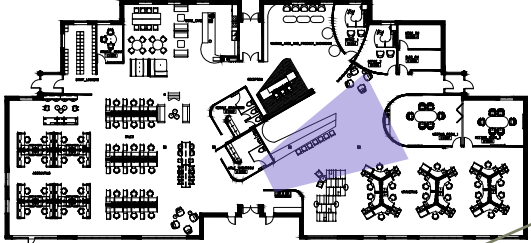
FOOD SERVICES FOR EMPLOYEES TO GET A NUTRITIOUS MEAL



WORK CAFE



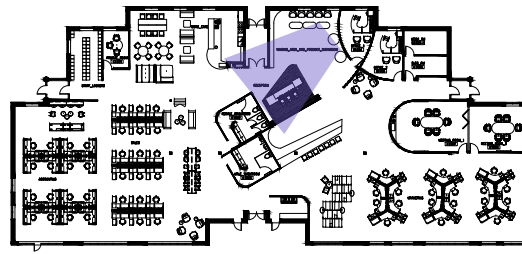
LARE SCREEN BUILT INTO THE WALL TO
DISPLAY PROJECT WORK OR PRESENTATIONS
IN LARGE COLLABORATION AREA



EZO BOARD ACCOUSTIC NIKE SWOOSH SHAPE



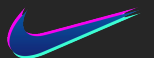
REUSED BASKETBALL HARDWOOD FLOORING



PRODUCT DISPLAY FOR PEOPLE WAITING



RECEPTION DESK AND PRODUCT DISPLAY



REFERENCES

- ALLSTEEL. (2019). PRODUCTS. RETRIEVED 8 OCTOBER 2019, FROM [HTTPS://WWW.ALLSTEELOFFICE.COM/PRODUCTS/](https://www.allsteeloffice.com/products/)
- BENJAMIN MOORE. (2019). COLOUR OVERVIEW | BENJAMIN MOORE. RETRIEVED 2 NOVEMBER 2019, FROM [HTTPS://WWW.BENJAMINMOORE.COM/EN-CA/COLOUR-OVERVIEW](https://www.benjaminmoore.com/en-ca/colour-overview)
- GLOBAL. (2019). OFFICE FURNITURE SOLUTIONS | GLOBAL FURNITURE GROUP. RETRIEVED 8 OCTOBER 2019, FROM [HTTPS://WWW.GLOBALFURNITUREGROUP.COM/CA](https://www.globalfurnituregroup.com/ca)
- MOHAWK GROUP. (2019). CARPET TILE - COLORBEAT TILE - ELECTRIC ORANGE | MOHAWK GROUP. RETRIEVED 2 NOVEMBER 2019, FROM [HTTPS://WWW.MOHAWKGROUP.COM/DETAIL/CARPET/7371/128044/COLORBEAT-TILE-12BY36](https://www.mohawkgroup.com/detail/carpet/7371/128044/colorbeat-tile-12by36)
- ROACH, D., & NAZARIO, M. (2015). NIKE'S INCREDIBLE ROAD TO BECOMING THE WORLD'S DOMINANT SNEAKER RETAILER. RETRIEVED 8 OCTOBER 2019, FROM [HTTPS://WWW.BUSINESSINSIDER.COM/NIKE-HISTORY-TIMELINE-2015-10](https://www.businessinsider.com/nike-history-timeline-2015-10)
-